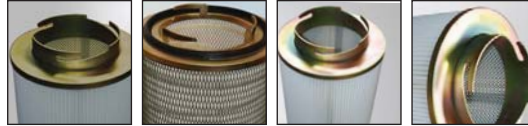


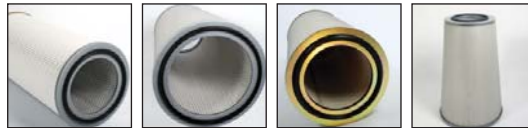
# DUST DIVISION

Type	Diameter.	High	Filtermedia	filtermedia m2	Bands
<b>CDD</b>	<b>351</b>	<b>711</b>	<b>806</b>	<b>12.5</b>	<b>3B</b>

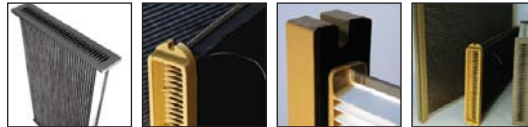
**CD...3P**  
Twist lock



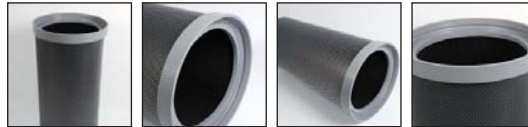
**CDD/CDDK/CD/  
CDC/CDCK:**  
DIN cartridge



**CPC:**  
Cell Element



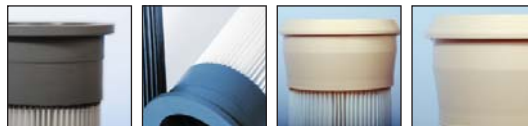
**CS:**  
Dustmaster



\* **CJ:**  
JEt cartridge



**CPB/ CBLPB**  
Pleated bag  
Top/bottomloader



**CRD:**  
Thread (RD)  
Cartridge



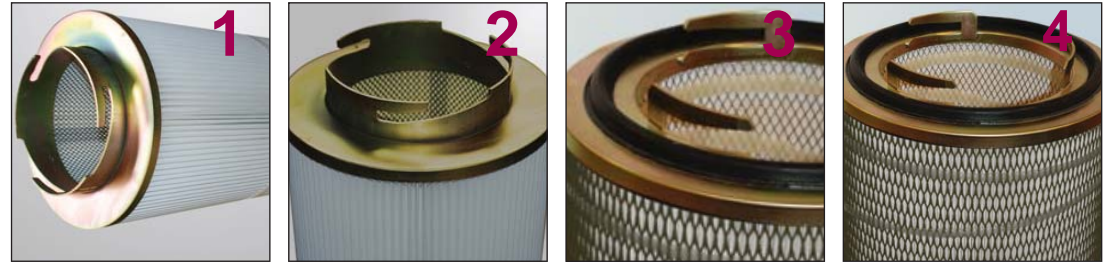
\* **CJ:**  
Steck cartridge



## Filtermedia:

NA 137	Blend media (80% cellulose + 20% polyester)
NA 137 ALU	Blend media (cellulose with polyester) / Antistatic
NA 138 FH	Blend media (80% cellulose + 20% polyester)
NA 1239	100% Cellulose
NA 140	Blend media (80% cellulose + 20% polyester)
NA 170	100% Polyester
NA 170 ALU	100% Polyester + Antistatic
NA 220	Micromelt with polyester
NA 600 Oil mist	100% Polyester
NA 796	100% Cellulose
NA 800 PTFE Membran	100% Polyester with Teflon membrane
NA 800 PTFE Membran+	100% Polyester / Antistatic with Teflon membrane
NA 806	100% Polyester
NA 806 ALU	100% Polyester / Antistatic
NA 806 FC	100% Polyester / with FC coating
NA 806 ANFC	100% Polyester / Antistatic with FC coating
NA 909	100% Polyester
NA 909 ALU	100% Polyester / Antistatic
NA 909 FC	100% Polyester / with FC coating
NA 909 ANFC	100% Polyester / FC + Antistatic coating
NA 93	100% Polypropylehn

# Twist Lock



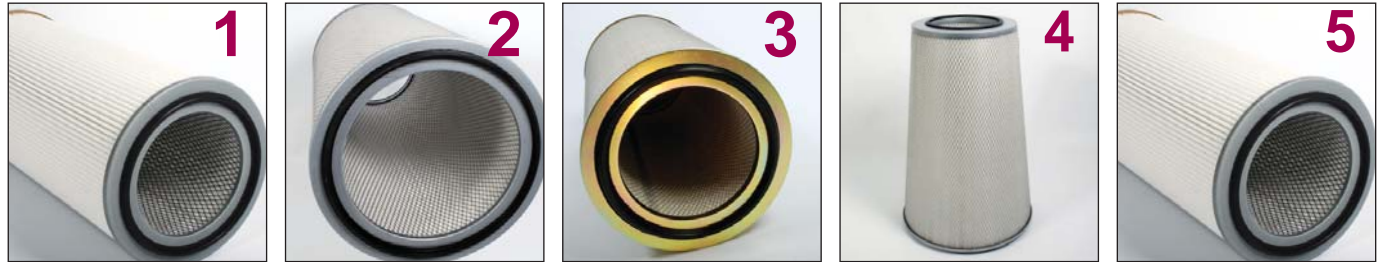
Example : CD325/1000/140/8 3P

DUST DIVISION

TYPES:	Diameter			Lenght:	filtermedia areal/m <sup>2</sup> :
	TFLH	OD	ID		
Twist lock					
CD 47	47	325	209	300-1400mm	
CD 52	52	325	209	300-1400mm	3,84
USA	29	325	209	300-1400mm	8
				NA 137	Blend media (80% cellulose + 20% polyester)
				NA 137 ALU	Blend media (cellulose with polyester) / Antistatic
				NA 138 FH	Blend media (80% cellulose + 20% polyester)
				NA 1239	100% Cellulose
				NA 140	Blend media (80% cellulose + 20% polyester)
				NA 170	100% Polyester
				NA 170 ALU	100% Polyester + Antistatic
				NA 220	Micromelt with polyester
				NA 600 Oil mist	100% Polyester
				NA 796	100% Cellulose
				NA 800 PTFE Membran	100% Polyester with Teflon membrane
				NA 800 PTFE Membran+	100% Polyester / Antistatic with Teflon membrane
				NA 806	100% Polyester
				NA 806 ALU	100% Polyester / Antistatic
				NA 806 FC	100% Polyester / with FC coating
				NA 806 ANFC	100% Polyester / Antistatic with FC coating
				NA 909	100% Polyester
				NA 909 ALU	100% Polyester / Antistatic
				NA 909 FC	100% Polyester / with FC coating
				NA 909 ANFC	100% Polyester / FC + Antistatic coating
				NA 93	100% Polypropylehn

OD = outside dia.  
ID = inside dia.

# DIN Cartridge



Example : CDD/325/710/140/10

DUST DIVISION

TYPES:	Diameter		Lenght:	NA	Media	filtermedia areal/m <sup>2</sup> :
	OD	ID				
<b>Open / Open</b>				NA 137	Blend media (80% cellulose + 20% polyester)	
				NA 137 ALU	Blend media (cellulose with polyester) / Antistatic	
				NA 138 FH	Blend media (80% cellulose + 20% polyester)	
	CDD	150 85/95	300-1400mm	NA 1239	100% Cellulose	3,84
	CDD	225 143	300-1400mm	NA 140	Blend media (80% cellulose + 20% polyester)	10
	CDD	325 215	300-1400mm	NA 170	100% Polyester	12,5
	CDD	351 241	300-1400mm	NA 170 ALU	100% Polyester + Antistatic	13
<b>Open / Close:</b>				NA 220	Micromelt with polyester	15,6
	CD	150 85/95	300-1400mm	NA 600 Oil mist	100% Polyester	25,5
	CD	225 143	300-1400mm	NA 796	100% Cellulose	
	CD	325 215	300-1400mm	NA 800 PTFE Membran	100% Polyester with Teflon membrane	
	CD	351 241	300-1400mm	NA 800 PTFE Membran+	100% Polyester / Antistatic with Teflon membrane	
<b>Konisk:</b>				NA 806	100% Polyester	
	CDC	445 335	710mm	NA 806 ALU	100% Polyester / Antistatic	
	CDC	570 470	710mm	NA 806 FC	100% Polyester / with FC coating	
				NA 806 ANFC	100% Polyester / Antistatic with FC coating	
				NA 909	100% Polyester	
				NA 909 ALU	100% Polyester / Antistatic	
				NA 909 FC	100% Polyester / with FC coating	
				NA 909 ANFC	100% Polyester / FC + Antistatic coating	
				NA 93	100% Polypropylehn	

OD = outside dia.  
ID = inside dia.

# CELL Cartridge



Example : CPC/498/1000/170/12.5

DUST DIVISION

## TYPES:

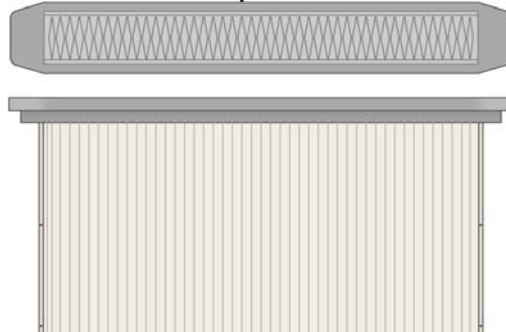
### CELL type 1

	Dimension wide	Dimension lenght
CPC	485	850,1115
CPC	498	1000,1200
CPC	515	1000,1200
CPC	520/500	1000,1200
CPC	630	1200

### CELL type 2

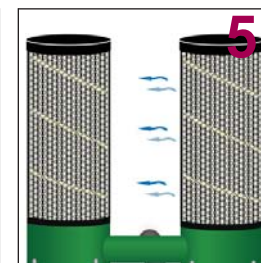
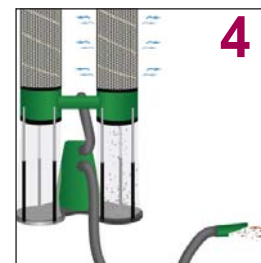
	Dimension wide	Dimension lenght
CPC	420	920,1000
CPC	635	1200+1250
CPC	1050	1555

målene er af det plisserede materiale



		filtermedia areal/m <sup>2</sup> :
NA 137	Blend media (80% cellulose + 20% polyester)	
NA 137 ALU	Blend media (cellulose with polyester) / Antistatic	
NA 138 FH	Blend media (80% cellulose + 20% polyester)	
NA 1239	100% Cellulose	3,84
NA 140	Blend media (80% cellulose + 20% polyester)	10
NA 170	100% Polyester	12,5
NA 170 ALU	100% Polyester + Antistatic	13
NA 220	Micromelt with polyester	15,6
NA 600 Oil mist	100% Polyester	25,5
NA 796	100% Cellulose	
NA 800 PTFE Membran	100% Polyester with Teflon membrane	
NA 800 PTFE Membran+	100% Polyester / Antistatic with Teflon membrane	
NA 806	100% Polyester	
NA 806 ALU	100% Polyester / Antistatic	
NA 806 FC	100% Polyester / with FC coating	
NA 806 ANFC	100% Polyester / Antistatic with FC coating	
NA 909	100% Polyester	
NA 909 ALU	100% Polyester / Antistatic	
NA 909 FC	100% Polyester / with FC coating	
NA 909 ANFC	100% Polyester / FC + Antistatic coating	
NA 93	100% Polypropylehn	

# Dustmaster



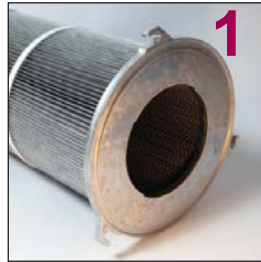
Example : CS/320/710/170alu/13

DUST DIVISION

TYPES:	Diameter OD	Lenght:	NA	filtermedia areal/m <sup>2</sup> :
Dustmaster			NA 137	Blend media (80% cellulose + 20% polyester)
			NA 137 ALU	Blend media (cellulose with polyester) / Antistatic
			NA 138 FH	Blend media (80% cellulose + 20% polyester)
CS	210	500-1000mm	NA 1239	100% Cellulose
CS	230	500-1000mm	NA 140	Blend media (80% cellulose + 20% polyester)
CS	320	500-1000mm	NA 170	100% Polyester
CS	320A	500-1000mm	NA 170 ALU	100% Polyester + Antistatic
CS	400	500-1000mm	NA 220	Micromelt with polyester
CS	478	500-1000mm	NA 600 Oil mist	100% Polyester
CS	495	500-1000mm	NA 796	100% Cellulose
CS	520	500-1000mm	NA 800 PTFE Membran	100% Polyester with Teflon membrane
CS	600	500-1000mm	NA 800 PTFE Membran+	100% Polyester / Antistatic with Teflon membrane
			NA 806	100% Polyester
			NA 806 ALU	100% Polyester / Antistatic
			NA 806 FC	100% Polyester / with FC coating
			NA 806 ANFC	100% Polyester / Antistatic with FC coating
			NA 909	100% Polyester
			NA 909 ALU	100% Polyester / Antistatic
			NA 909 FC	100% Polyester / with FC coating
			NA 909 ANFC	100% Polyester / FC + Antistatic coating
			NA 93	100% Polypropylehn

A = open/open  
OD = outer dia.

# JET Cartridge



Example : CJ/325/710/170alu/13

DUST DIVISION

TYPES:	Diameter OD	Lenght:	NA	Blend media (80% cellulose + 20% polyester)	filtermedia areal/m <sup>2</sup> :
<b>3 LUG metal</b>			NA 137	Blend media (80% cellulose + 20% polyester)	
			NA 137 ALU	Blend media (cellulose with polyester) / Antistatic	
			NA 138 FH	Blend media (80% cellulose + 20% polyester)	
			NA 1239	100% Cellulose	<b>3,84</b>
			NA 140	Blend media (80% cellulose + 20% polyester)	<b>10</b>
			NA 170	100% Polyester	<b>12,5</b>
			NA 170 ALU	100% Polyester + Antistatic	<b>13</b>
<b>3 LUG plast</b>			NA 220	Micromelt with polyester	<b>15,6</b>
			NA 600 Oil mist	100% Polyester	<b>25,5</b>
<b>4 LUG metal</b>			NA 796	100% Cellulose	
			NA 800 PTFE Membran	100% Polyester with Teflon membrane	
			NA 800 PTFE Membran+	100% Polyester / Antistatic with Teflon membrane	
<b>4 LUG plast</b>			NA 806	100% Polyester	
			NA 806 ALU	100% Polyester / Antistatic	
			NA 806 FC	100% Polyester / with FC coating	
			NA 806 ANFC	100% Polyester / Antistatic with FC coating	
			NA 909	100% Polyester	
			NA 909 ALU	100% Polyester / Antistatic	
			NA 909 FC	100% Polyester / with FC coating	
			NA 909 ANFC	100% Polyester / FC + Antistatic coating	
			NA 93	100% Polypropylehn	

OD = outside dia.

FL4 & FL5 mounted nedera

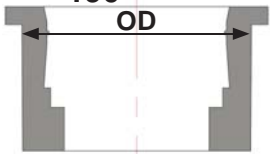
# Pleated Bag



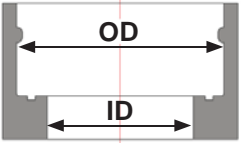
Example : CPB/154/1000/220/15,6/WL

DUST DIVISION

TYPES:	Dim hul nr. OD	Lenght:	NA	filtermedia	Band:
				areal/m <sup>2</sup> :	Weldtech or Glue
<b>Top loader</b>			NA 137	Blend media (80% cellulose + 20% polyester)	
CPB	120	300-2000mm	NA 137 ALU	Blend media (cellulose with polyester) / Antistatic	
CPB	130-135 130 130	300-2000mm	NA 138 FH	Blend media (80% cellulose + 20% polyester)	
CPB	150 145 141	300-2000mm	NA 1239	100% Cellulose	3,84
CPB	154-157 154 152	300-2000mm	NA 140	Blend media (80% cellulose + 20% polyester)	10
CPB	160 160 159	300-2000mm	NA 170	100% Polyester	12,5
	190	300-2000mm	NA 170 ALU	100% Polyester + Antistatic	13
		300-2000mm	NA 220	Micromelt with polyester	15,6
			NA 600 Oil mist	100% Polyester	25,5
			NA 796	100% Cellulose	
<b>bottom loader</b>			NA 800 PTFE Membran	100% Polyester with Teflon membrane	
			NA 800 PTFE Membran+	100% Polyester / Antistatic with Teflon membrane	
CBLPB	106 105	300-2000mm	NA 806	100% Polyester	
CBLPB	124 103	300-2000mm	NA 806 ALU	100% Polyester / Antistatic	
CBLPB	130 130	300-2000mm	NA 806 FC	100% Polyester / with FC coating	
CBLPB	160 160	300-2000mm	NA 806 ANFC	100% Polyester / Antistatic with FC coating	
			NA 909	100% Polyester	
			NA 909 ALU	100% Polyester / Antistatic	
			NA 909 FC	100% Polyester / with FC coating	
			NA 909 ANFC	100% Polyester / FC + Antistatic coating	
			NA 93	100% Polypropylehn	

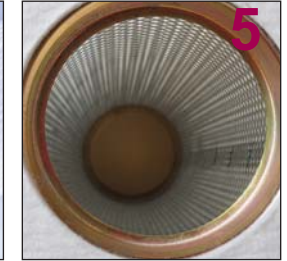
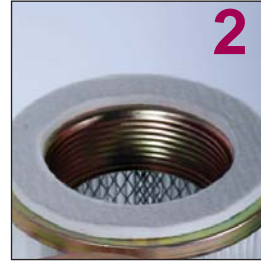
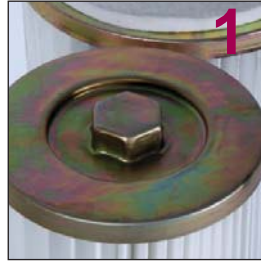


ID nr. OD



OD = outside dia.  
ID = inside dia.

# Gevind Cartridge (RD)



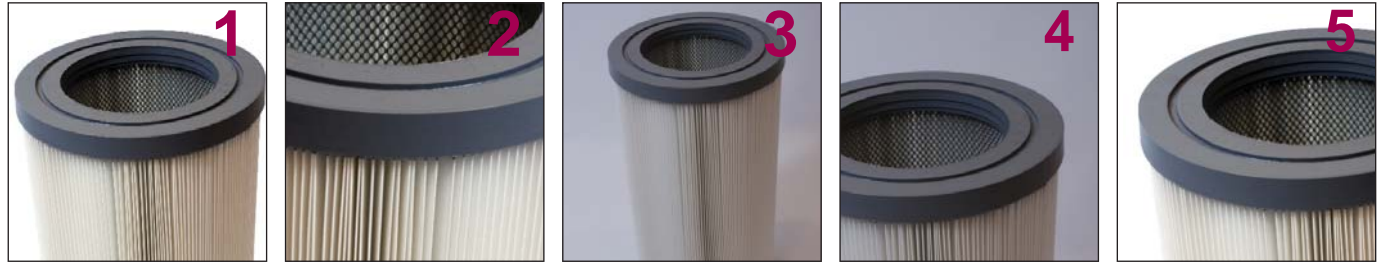
Example : CRD/161/710/170alu/13

DUST DIVISION

TYPES:	Diameter		Lenght:	NA	Media	filtermedia areal/m <sup>2</sup> :
	OD	ID				
RD				NA 137	Blend media (80% cellulose + 20% polyester)	
	CRD 60	54	200-2000mm	NA 137 ALU	Blend media (cellulose with polyester) / Antistatic	
	CRD 72	68	200-2000mm	NA 138 FH	Blend media (80% cellulose + 20% polyester)	
	CRD 161	90	200-2000mm	NA 1239	100% Cellulose	3,84
	CRD 209	90	200-2000mm	NA 140	Blend media (80% cellulose + 20% polyester)	10
				NA 170	100% Polyester	12,5
				NA 170 ALU	100% Polyester + Antistatic	13
				NA 220	Micromelt with polyester	15,6
				NA 600 Oil mist	100% Polyester	25,5
				NA 796	100% Cellulose	
				NA 800 PTFE Membran	100% Polyester with Teflon membrane	
				NA 800 PTFE Membran+	100% Polyester / Antistatic with Teflon membrane	
				NA 806	100% Polyester	
				NA 806 ALU	100% Polyester / Antistatic	
				NA 806 FC	100% Polyester / with FC coating	
				NA 806 ANFC	100% Polyester / Antistatic with FC coating	
				NA 909	100% Polyester	
				NA 909 ALU	100% Polyester / Antistatic	
				NA 909 FC	100% Polyester / with FC coating	
				NA 909 ANFC	100% Polyester / FC + Antistatic coating	
				NA 93	100% Polypropylehn	

OD = outside dia.  
ID = inside dia.

# STECK Cartridge



Example : CJ/157/710/170alu/13

DUST DIVISION

TYPES:	Diameter OD	Length:			filtermedia areal/m <sup>2</sup> :
Steck			NA 137	Blend media (80% cellulose + 20% polyester)	
			NA 137 ALU	Blend media (cellulose with polyester) / Antistatic	
			NA 138 FH	Blend media (80% cellulose + 20% polyester)	
CJ	127	200-2000mm	NA 1239	100% Cellulose	3,84
CJ	137	200-2000mm	NA 140	Blend media (80% cellulose + 20% polyester)	10
CJ	157	200-2000mm	NA 170	100% Polyester	12,5
CJ	227	200-2000mm	NA 170 ALU	100% Polyester + Antistatic	13
	327	200-2000mm	NA 220	Micromelt with polyester	15,6
			NA 600 Oil mist	100% Polyester	25,5
			NA 796	100% Cellulose	
			NA 800 PTFE Membran	100% Polyester with Teflon membrane	
			NA 800 PTFE Membran+	100% Polyester / Antistatic with Teflon membrane	
			NA 806	100% Polyester	
			NA 806 ALU	100% Polyester / Antistatic	
			NA 806 FC	100% Polyester / with FC coating	
			NA 806 ANFC	100% Polyester / Antistatic with FC coating	
			NA 909	100% Polyester	
			NA 909 ALU	100% Polyester / Antistatic	
			NA 909 FC	100% Polyester / with FC coating	
			NA 909 ANFC	100% Polyester / FC + Antistatic coating	
			NA 93	100% Polypropylehn	

OD = outside dia.

# Filtermedia

Low-medium temperature				
Fiber Generic name	Cotton	Polyamid	Polypropelene	Polyester
Fiber Trade name	- - -	Nylon 66	Herculon	Dacron®
High temperature				
Fiber Generic name	Aramid	Glass	PTFE	Polyethylene Sulfide
Fiber Trade name	Nomex®	Fiberglass®	Teflon®	Rylon®

DUST DIVISION

## Media

Polyester

## Use/Characteristic:

Commonly used material in the industry

Singed polyester

Improves dust cake release

PTFE membrane polyester

Captures fine particles where artificial dust cake is needed

Aramid

Suitable for high temperature applications

Polypropelene

Known for superior chemical resistance

## Media used in Cartridge filters

Cellulose

Commonly used cartridge media material.

Cellulose/polyester

Has high durability and good abrasion resistance

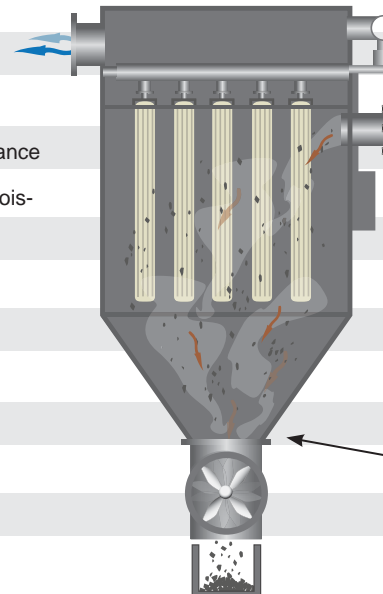
Spun bonded polyester

Has good dust cake release and excellent moisture tolerance and abrasion resistance

## Media used in Pleated bag filters

Spun bonded polyester

Commonly used pleated bag media

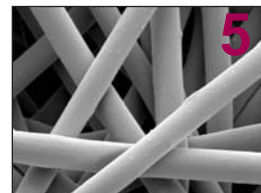
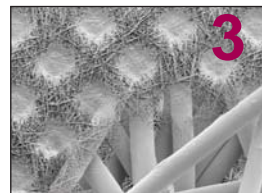


The two main functions of media filters in major types of industrial dust collectors are:

- 1) **to stop dust particles on its surface while allowing clean air molecules to pass through and**
- 2) **to provide easy release of the dust cake during cleaning.**

Media filter cleaning is normally done by a burst of clean air in the reverse direction to the air stream with a velocity greater than air stream. The greater force of the cleaning air burst dislodges (vibration) the dust cake from the filter media and drops it into the hopper area (the funnel and the dust collecting area (\* støvopsamlings tragten/tønden). For greater efficiency, a fan is used to push or pull air through filter media openings.

# Filtermedia



DUST DIVISION

Filtermedia:		Weight g/m <sup>2</sup>	Temperatur celsius air: dry      moisture		Thickness mm	airpermeability 200Pa.	Klasse
NA 137	Blend media (80% cellulose + 20% polyester)	130	80	65	0,32	560 m3 m2/h	M
NA 137 ALU	Blend media (cellulose with polyester) / Antistatic	130	80	65	0,32	560 m3 m2/h	M
NA 138 FH	Blend media (80% cellulose + 20% polyester)	170	60	60	0,32	520 m3 m2/h	M
NA 1239	100% Cellulose	120	-	-	0,33	-	L
NA 140	Blend media (80% cellulose + 20% polyester)	131	-	-	0,31	-	-
NA 170	100% Polyester	170	110	90	0,50	890 m3 m2/h	M
NA 170 ALU	100% Polyester + Antistatic	170	110	90	0,50	855 m3 m2/h	M
NA 220	Micromelt with polyester	220	150	95	2,1	940 m3 m2/h	M
NA 600 Oil mist	100% Polyester	300	-	-	3,5-4,5	100-1500 l (m2xs)	not tested
NA 796	100% Cellulose	180	150	95	2,1	1020 m3 m2/h	L
NA 800 PTFE Membran	100% Polyester with Teflon membrane	250	120	90	0,6	190 m3 m2/h	M
NA 800 PTFE Membran+	100% Polyester / Antistatic with Teflon membrane	300	120	90	0,6	127 m3 m2/h	M
NA 806	100% Polyester	260	120	90	0,6	530 m3 m2/h	M
NA 806 ALU	100% Polyester / Antistatic	260	120	90	0,6	490 m3 m2/h	M
NA 806 FC	100% Polyester / with FC coating	260	120	90	0,6	470 m3 m2/h	M
NA 806 ANFC	100% Polyester / Antistatic with FC coating	260	120	90	0,6	480 m3 m2/h	M
NA 909	100% Polyester	240	140	90	0,55	490 m3 m2/h	M
NA 909 ALU	100% Polyester / Antistatic	250	140	90	-	484 m3 m2/h	M
NA 909 FC	100% Polyester / with FC coating	250	-	-	-	485 m3 m2/h	M
NA 909 ANFC	100% Polyester / FC + Antistatic coating	250	140	90	-	482 m3 m2/h	M
NA 93	100% Polypropylehn	200	-	-	0,75	1080 m3 m2/h	M